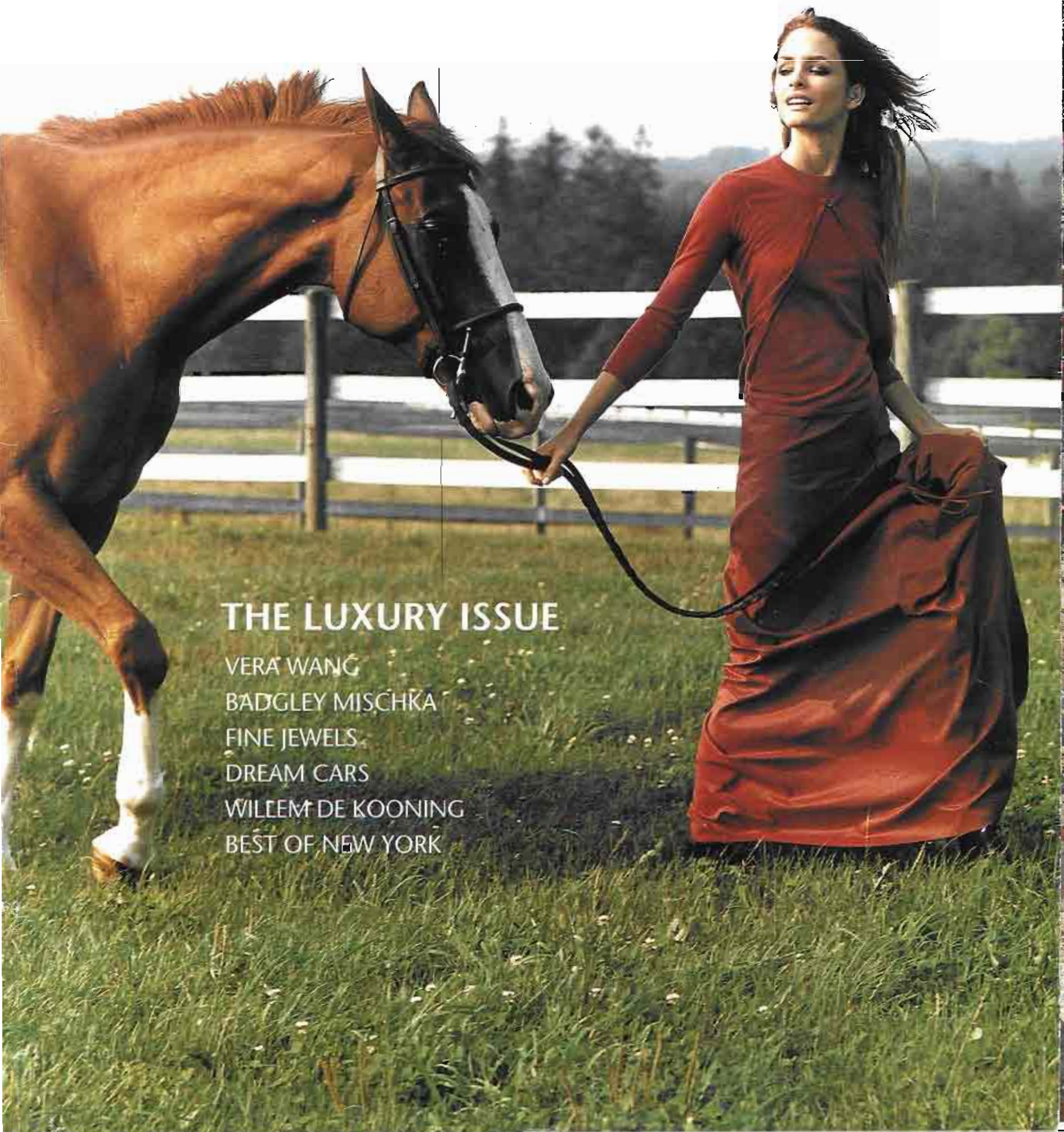


HAMPTONS

SEPTEMBER 2000

Country



THE LUXURY ISSUE

VERA WANG

BADGLEY MISCHKA

FINE JEWELS

DREAM CARS

WILLEM DE KOONING

BEST OF NEW YORK

One House, *Many Gardens*

BY MARTHA BAKER
PHOTOGRAPHY BY CHUCK BAKER

When landscape artist Miguel Pons and his partner found their 1880's farmhouse in the Hamptons, it was love at first sight. Although the house itself is small, Pons who has had his own business for two years, realized that both the house itself and the outside areas were filled with possibilities. Because the house lacks interior space, the outdoor areas have become important extensions of the house itself. With thoughtful reconfiguration, consummate good taste, and magically green fingers, Pons and his partner have literally transformed their outdoor and indoor living areas in just a short time.

An urn filled with tall, exuberant grape ivy stands at the far corner of the bluestone paving surrounding Miguel Pons' swimming pool. This planting serves as a visual divider between the pool and garden area, surrounded by lovely perennial beds.









The shade garden, Pon's favorite, is filled with oak-leaf hydrangeas and hand-me-down plants from his landscaping clients, a secret spot where sunlight dapples down through a thick canopy of leaves.



An inviting, white picket fence, in perfect harmony with the 19th century farmhouse, leads to Pons' recently installed pool and sunny garden.

When they first bought the farmhouse, it had a sunroom on the front. First order of business was to knock down the wall to the sunroom, incorporating the space into their living room. Today, the outside area immediately-adjacent to the living room is called the sunroom, even though it isn't anymore. This "sunroom" is now gravelled courtyard, surrounded by a hedge and strewn with bright mercury balls, a playful riff on a Zen garden that somehow evokes a childrens' playground. They chose gravel for this area because its shade reflects that of the sisal carpeting used indoors, carrying the feel of the interior outdoors and creating a sense of balance between both areas.

Added last year, the screened-in porch was built in just a week. Today it is the quintessential garden room, where life as lived as many hours as possible during the warm months. It's where meals get eaten, the paper gets read, where guests are entertained and the three pugs of the household are kept amused. The dark, wooden Indonesian sofa, dining table and chairs and armchairs, all from John Rogers, are just right with the room's dark floor planks. Bathed in bright Hamptons light, this room has a laid-back, plantation feel.

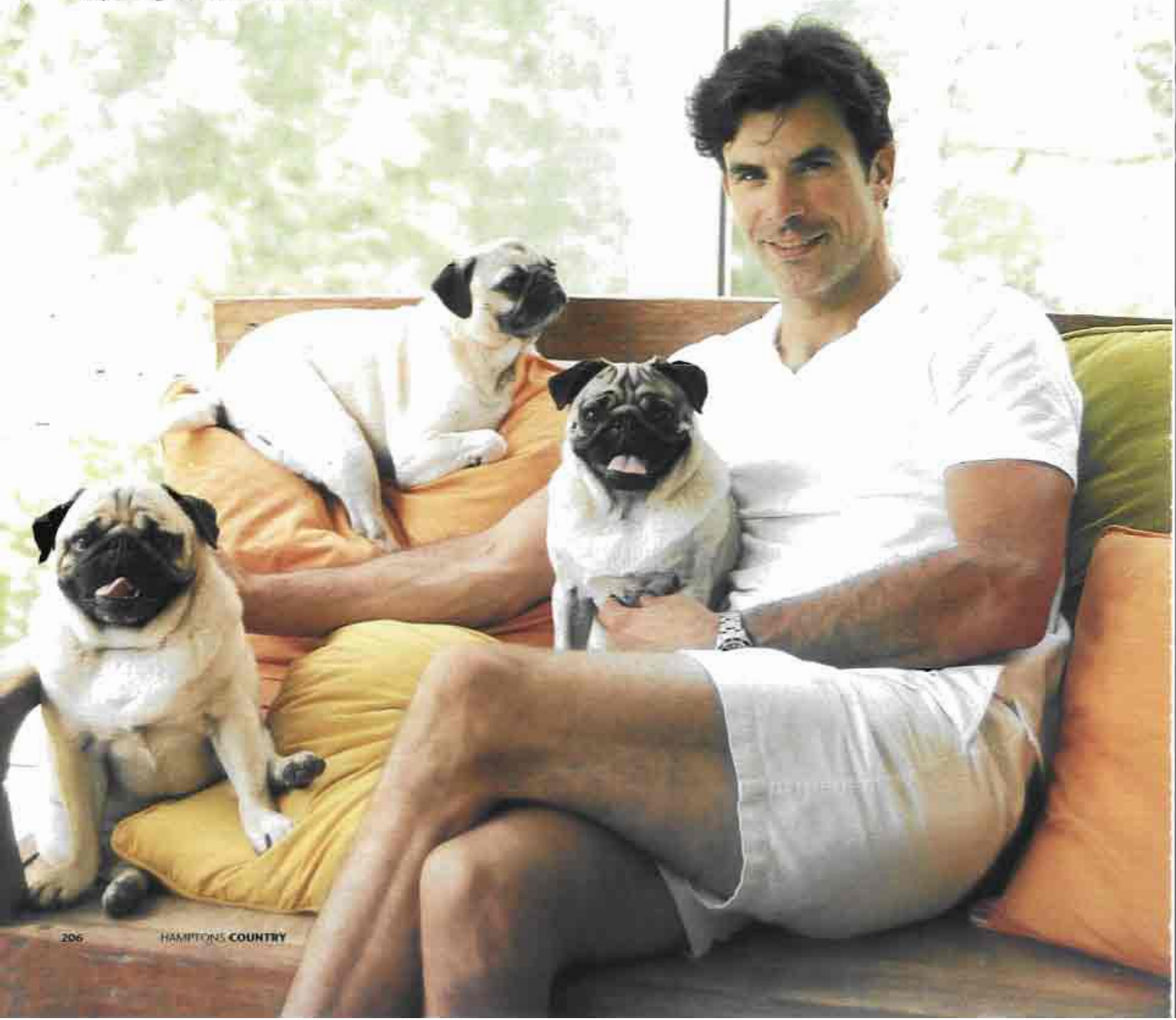
Added last year, the screened-in porch is where Pons, his partner and their slew of pugs spend many delightful indoor/outdoor hours.



The pool area was dense woodland. After it was cleared of trees and brush, Pons installed the pool and created a perennial garden. Splashed with sunshine and paved with bluestone, its white wooden gate an open invitation, the pool and its surrounding lawn and garden look amazingly, as though they have always been there.

Miguel's favorite among the discrete outdoor living rooms is the shade garden, his favorite kind of garden to design. Filled with a collection of cast-off and leftover plants gleaned from his landscaping clients, this garden is mature and thriving.

Two other garden areas, the side garden and the rock garden, now occupy space that was formerly the driveway, which Pons and his partner shortened so they would not have to look out on cars. Today, the area, planted with an unusual hydrangea Pons first spotted in England, *hydrangea aspera*, along with a lush mix of annuals and perennials, now contains a small dining area. With its unexpected, bright red table and chairs, a vivid splash of color amid the dense greenery of the plants, it is an irresistible space for dining or schmoozing or just plain sitting. Pons likes the bright red so much he's now contemplating his pool furniture. Clearly, a designer's work is never done ... ●





The sunken garden, surrounded by lushly planted dry-stack walls, boasts a table and chairs painted a surprising—and wonderful—bright shade of red.